

EVERY WOMAN IN THE WORLD

Words and Music by DOMINIC BUGATTI
and FRANK MUSKER

Moderately

mf

The piano introduction consists of two staves. The right hand features a rhythmic pattern of eighth notes and chords, while the left hand plays a simple bass line of quarter notes. The key signature has two flats (Bb and Eb), and the time signature is 4/4.

Bb



Ebmaj7



O-ver - night scenes, din - ner and wine, Sat - ur - day girls. I was
cra - zy old town it can dray you down, till you run out of dreams. So you

The first system of the song features a vocal line and piano accompaniment. The vocal line is on a single staff with lyrics underneath. The piano accompaniment is on two staves. The key signature has two flats, and the time signature is 4/4. The lyrics are: "O-ver - night scenes, din - ner and wine, Sat - ur - day girls. I was cra - zy old town it can dray you down, till you run out of dreams. So you".

Bb



Ebmaj7



nev - er in love, nev - er had the time, in my hus - tle and hur - ry world,
par - ty all night, to the mu - sic and lights, but you don't know what hap - pi - ness means. I was

The second system of the song features a vocal line and piano accompaniment. The vocal line is on a single staff with lyrics underneath. The piano accompaniment is on two staves. The key signature has two flats, and the time signature is 4/4. The lyrics are: "nev - er in love, nev - er had the time, in my hus - tle and hur - ry world, par - ty all night, to the mu - sic and lights, but you don't know what hap - pi - ness means. I was".

Cm7

Cm7/F

Dm7

Gm7

Laugh-ing my - self to sleep, wak-ing up lone - ly. I
 danc-in' in the dark with stran - gers, no love a - round me. When

Cm7

Cm7/Bb

1 Cm7/F

2 Cm7/F

need-ed some-one to hold me, oh. It's such a Girl, you're
 sud - den-ly you found me, oh.

Bbmaj7

Dm

Ebmaj7

Cm7

ev' - ry wom-an in the world to me. You're my fan - ta - sy, you're

Cm7/F

Bbmaj7

Dm

Ebmaj7

Dm7

my re - al - i - ty. Girl, you're ev' - ry wom-an in the world to me. You're

Cm7



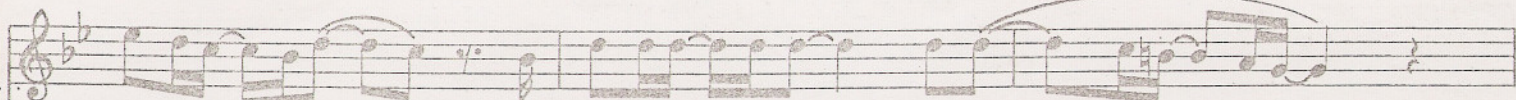
D7sus



D7



G



ev - ry - thing_ I need, you're ev' - ry - thing_ to me, oh girl.



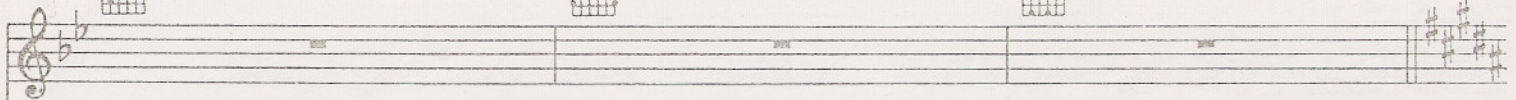
C



G



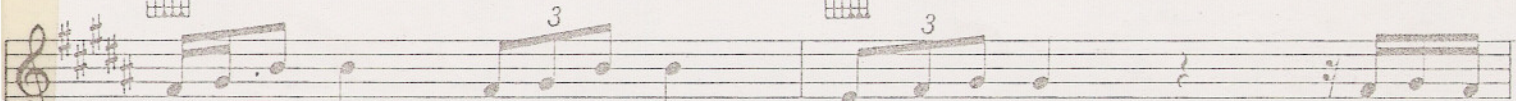
C#m7/F#



B



Emaj7



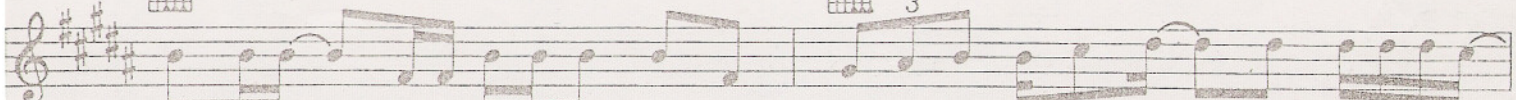
Ev' - ry - thing good, ev' - ry - thing fine, that's what you are. So, put your



B



Emaj7



hand in mine_ and to - geth - er we'll climb as high as the high - est star. I'm liv - in' a life -



C#m7

C#m7/F#

D#m7

G#m7

C#m7

C#m7/B

- time in ev' - ry min - ute that we're to-geth - er, and I'm stay - in' right here for - ev - er, oh.

F#7/A#

Bmaj7

D#m

Emaj7

Girl, you're ev' - ry wom-an in the world to me.

C#m7

C#m7/F#

Bmaj7

D#m

You're my fan - ta - sy, you're my re - al - i - ty. Girl, you're ev' - ry wom-an in the world to

Emaj7

D#m7

C#m7

D#7sus

D#7

me. You're ev' - ry-thing I need, you're ev' - ry-thing to me, oh girl.

G#



C#



G11



Musical staff with treble clef, key signature of three sharps (F#, C#, G#), and a 4/4 time signature. It contains a melodic line with eighth and quarter notes.

Girl, you're

Musical staff with piano accompaniment, including treble and bass clefs. The bass line features a steady eighth-note accompaniment.

Cmaj7



Cmaj7/E



Fmaj7



Dm7



Musical staff with treble clef, 4/4 time signature, and lyrics: "ev' - ry wom-an in the world to me. You're my fan - ta - sy, you're".

ev' - ry wom-an in the world

to me.

You're my fan - ta - sy,

you're

Musical staff with piano accompaniment for the second system, including treble and bass clefs.

Dm7/G



Cmaj7



Cmaj7/E



Fmaj7



Em7



Musical staff with treble clef, 4/4 time signature, and lyrics: "my re - al - i - ty. Girl, you're ev' - ry wom-an in the world to me. You're".

my re - al - i - ty.

Girl, you're ev' - ry wom-an in the world

to me.

You're

Musical staff with piano accompaniment for the third system, including treble and bass clefs.

Dm7



Dm7/G



Repeat and Fade

Musical staff with treble clef, 4/4 time signature, and lyrics: "ev' - ry - thing I need, you're ev' - ry - thing to me. Girl, you're".

ev' - ry - thing I need,

you're ev' - ry - thing to me.

Girl, you're

Musical staff with piano accompaniment for the final system, including treble and bass clefs.