

# BEAUTIFUL

from Christina Aguilera's STRIPPED

Words and Music by  
LINDA PERRY

Gentle Ballad (♩ = 78)

Chord diagrams: Eb, Eb7/D♭, Cm7, Abm6/C♭

Chord diagrams: Eb, Eb7/D♭, Cm7, Abm6/C♭

Chord diagrams: Eb, Eb7/D♭, Cm7

Ev-'ry-day \_\_\_\_\_ is so won - der-ful, \_\_\_\_\_ then sud-den - ly, \_\_\_\_\_ it's hard to breathe. \_

Chord diagrams: Abm6/C♭, Eb, Eb7/D♭

Now and then \_\_\_\_\_ I get in - se-cure, \_\_\_\_\_ from all the pain, \_

Cm7



A♭m6/C♭



A♭



I'm so a - shamed. I am beau - ti - ful no  
You are beau - ti - ful no



Fm7



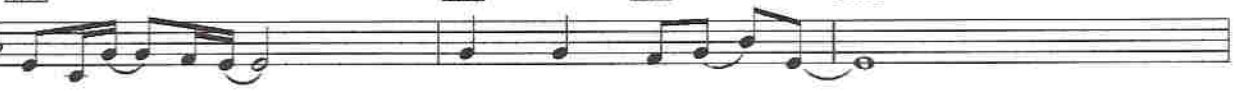
E♭



E♭/D♭



Cm7



mat - ter what they say - Words can't bring me down -  
mat - ter what they say - Words can't bring you down -



A♭



Fm7



E♭



E♭/D♭



I am beau - ti - ful in ev - ry sin - gle way - Yes words can't bring me down -  
'Cause you are beau - ti - ful in ev - ry sin - gle way - Yes words can't bring you down -



Cm7



Fm7

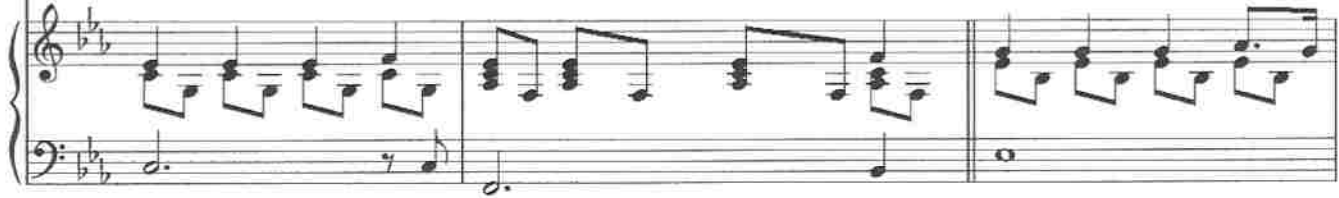


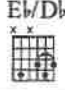
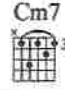

To Coda


E♭



So don't you bring me down to - day.  
So don't you bring me down to - day.



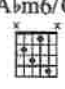
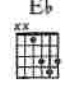







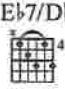
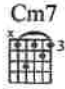

To all your friends — you're de - lir - i-ous      So con - sumed — in all your —



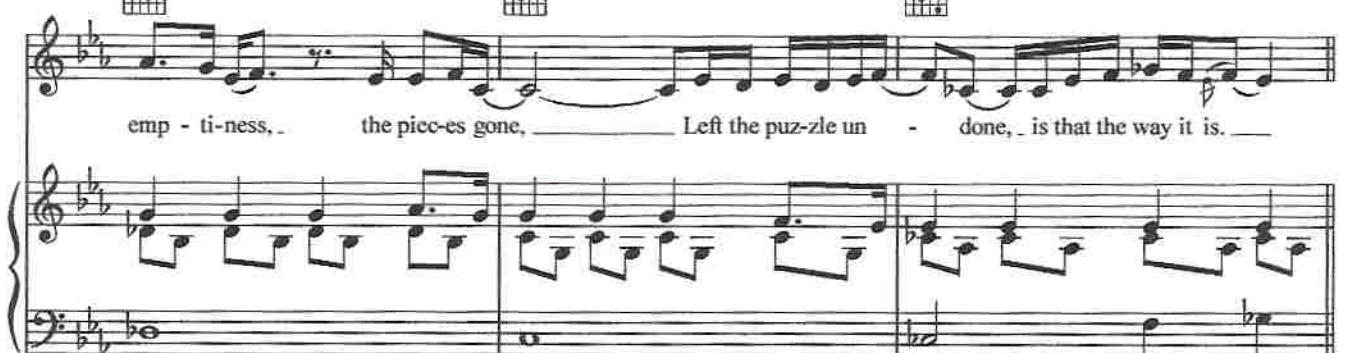
— doom —      Try - ing hard — to fill the

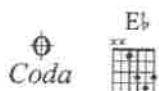


emp - ti-ness, the picc-es gone, Left the puz-zle un - done, is that the way it is. —

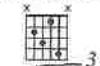
*D.S. al Coda*



Eb/D $\flat$ 

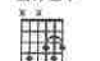
No mat - ter what we do, \_\_\_\_\_ No mat - ter what we say, \_\_\_\_\_

Cm7

Abm6/C $\flat$ 

mat - ter what we say \_\_\_\_\_ Yeah \_\_\_\_\_ Oh, \_\_\_\_\_  
We're the song in - side the tune, \_\_\_\_\_ full of beau - ti - ful mis - takes

Eb

Eb/D $\flat$ 

And ev - 'ry - where we go, \_\_\_\_\_ the sun will al - ways shine.

Cm7

Abm6/C $\flat$ 

the Sun will al - ways al - ways shine.  
And to - mor - row we might a - wake \_\_\_\_\_ on the oth - er side.



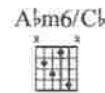
'Cause we are beau-ti-ful — no mat-ter what . they say . Yes words won't bring us — down, —



We are beau-ti-ful — in ev-'ry sin - gle way . Yes



words can't bring us down — So don't you bring me down — to-



day. Don't you bring me down . to -

6

E $\flat$



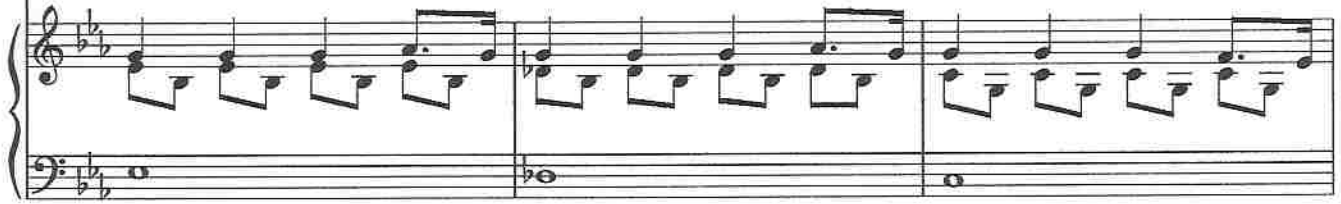
E $\flat$ 7/D $\flat$



Cm7



day.



A $\flat$ m6/C $\flat$



Don't you bring me down mm \_ hmm to - day.

E $\flat$

