

CONDUCTOR  
KEYBOARD 1

9A

# SOMEONE ELSE'S STORY

## SLOW 8-BEAT BALLAD

STGS (DIV) CL/KBD. 2

1 2

*p* *pp*

(+GTR.)

*p* *G<sup>b</sup>*

### 3 FLORENCE:

4 5

LONG A-GO IN SOME-ONE EL-SE'S LIFE-TIME SOME-ONE WITH MY NAME WHO LOOKED

KBD. 1 (DIV.)

GTR- ARPEGGIO STYLE

*G<sup>b</sup>* *C<sup>b</sup>* *D<sup>b</sup>sus D<sup>b</sup>* *G<sup>b</sup>* *E<sup>b</sup>m sus E<sup>b</sup>m*

6 7 8

A LOT LIKE ME CAME TO KNOW A MAN AND MADE A PRO-MISE HE

*C<sup>b</sup>* *G<sup>b</sup>/B<sup>b</sup>* *A<sup>b</sup>m* *D<sup>b</sup>* *G<sup>b</sup>* *D<sup>b</sup>* *C<sup>b</sup>* *D<sup>b</sup>sus D<sup>b</sup>*

8A

9 10

ON - LY HAD TO SAY AND THAT'S WHERE SHE WOULD BE

*G<sub>b</sub> Eb<sub>m</sub> 9 sus Eb<sub>m</sub> G<sub>b</sub>/D<sub>b</sub> Ab<sup>7</sup>/C D<sub>b</sub>*

11 12 13

LATE-LY AL-THOUGH HER FEEL-INGS RUN JUST AS DEEP THE PRO-MISE SHE MADE HAS GROWN IM-

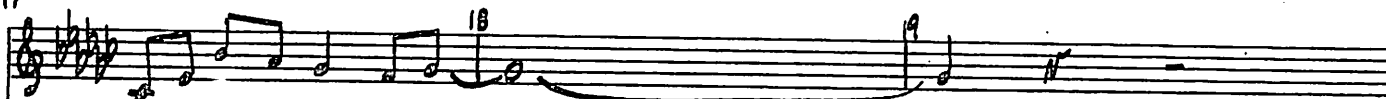
*D<sub>b</sub>/F G<sub>b</sub> G<sub>b</sub>/B<sub>b</sub> G<sub>b</sub>/B<sub>b</sub> C<sub>b</sub> Eb<sub>m</sub> Eb<sub>m</sub>/D<sub>b</sub>*

14 15 16

- POS-SI-BLE TO KEEP AND YET I WISH IT WAS-N'T SO

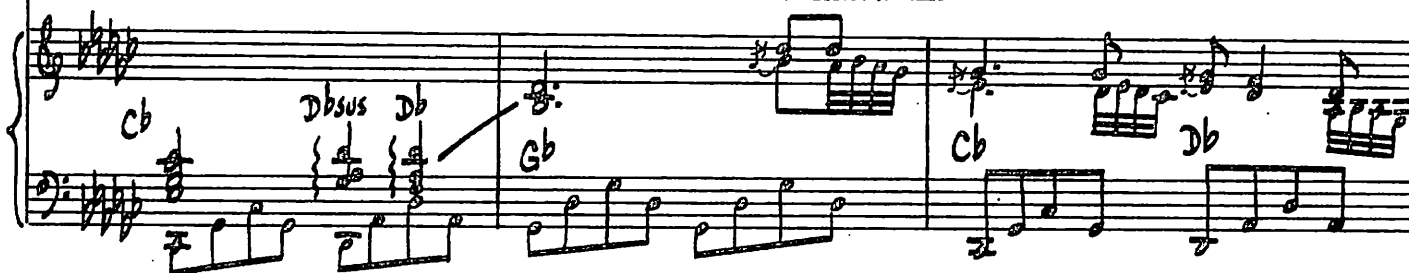
*Ab/C G<sub>b</sub>/D<sub>b</sub> C<sub>b</sub>/Eb D<sub>b</sub>/F G<sub>b</sub>/B<sub>b</sub>*

17



WILL HE MISS ME IF I GO

GTR - COUNTRY FILLS



20

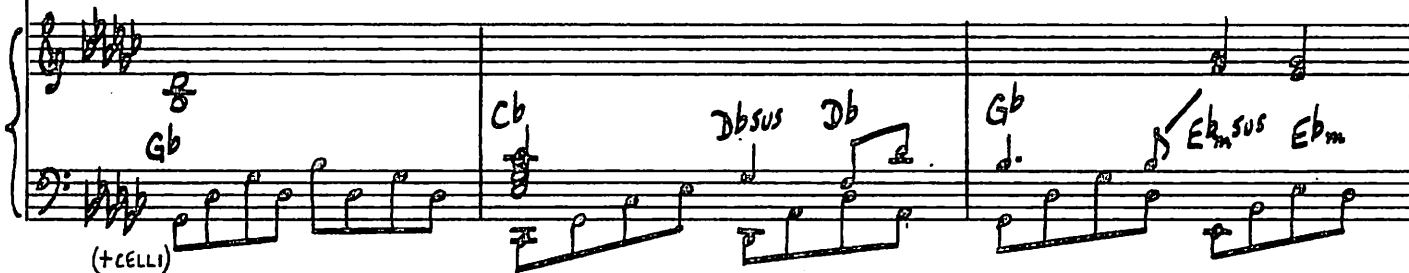
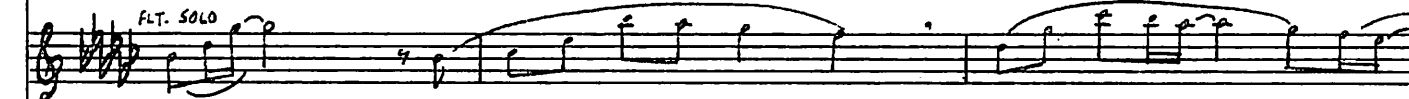


IN A WAY

IT'S SOME-ONE EL-SE'S STOR - Y

I DON'T SEE MY-SELF AS TAK-

FLT. SOLO



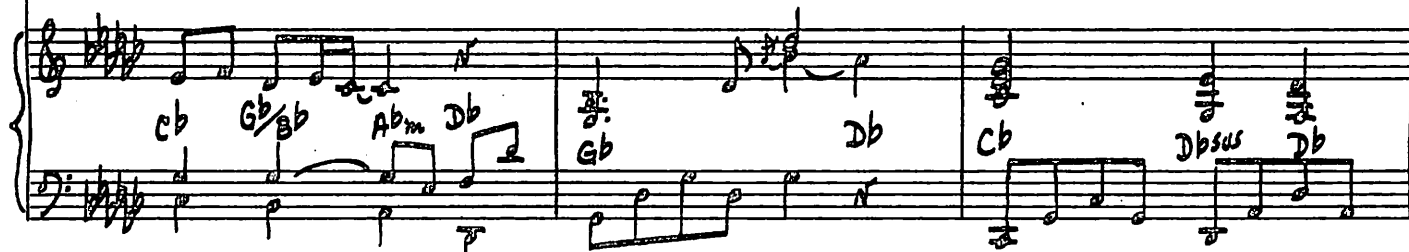
23



- ING PART AT ALL

YES-TER-DAY

A GIRL THAT I WAS FOND OF



26 FIN-AL-LY COULD SEE THE WRIT-ING ON THE WALL

27

Chords: Gb, Ebm sus, Ebm, Gb/Db, Ab/c, Db

28 SAD-LY SHE RE-AL-IZED SHE'D LEFT HIM BE-HIND AND

29

Chords: Db/F, Gb, Gb/Bb, Cb

30 SAD-DER THAN THAT SHE KNEW SHE WOULD-N'T EV-EN MIND AND THOUGH THERE'S

31

32

Chords: Ebm, Ebm/Db, Ab/c, Gb/Db

Performance markings: FLT., VLNS. PP, CELI

33 NO-THING LEFT TO SAY 34 WOULD HE LIS-TEN IF 35 I STAY

Chords: Cb/Eb, Dbsus/F, Gb/Bb, Cb, Dbsus, Db, Gb

Other markings: Cym. X, (+CELLI)

36 ALL VER-Y WELL TO SAY YOU 37 FOOL IT'S NOW OR NEV - ER

Chords: D, Bm, Gb, Cb, Gb/Bb

Other markings: BS., (+BS)

38 I COULD BE CHODS - ING 39 NO CHOI - CES WHAT-SO - EV - ER

Chords: Bbm, F/A, Abm, Db4-3-2-1

Other markings: BS.

41

42 43

I COULD BE IN SOME-ONE EL-SE'S STOR - Y IN SOME-ONE EL-SE'S LIFE AND HE

FLT. VLNS. HN. P

f G *up.* C/E D7sus D7 G Em6 Em

(+BS, KBD 2,3)

44 45 46

COULD BE IN MINE I DON'T SEE A REA-SON TO BE LONE - LY

GLOCK.

C G/B Am7 D G C Dsus D

47 48

I SHOULD TAKE MY CHAN - CES FUR - THER DOWN THE LINE

G Em sus Em G/B D

GTR.

49

50 51

AND IF THAT GIRL I KNEW SHOULD ASK MY AD - VICE OH I WOULD - N'T HES - I - TATE SHE

OBOE

VINS, HU (DIV)

D/F# G F/A G7 C Em Em/D

52 53 54

NEED - N'T ASK ME TWICE GO NOW! I'D TELL HER THAT FOR FREE

VINS. PP

OBOE

(+CYM.)

A7/C# G C/E D7/F# G/B

(+GTR.)

55 56 57 58 59

TROU - BLE IS THE GIRL IS ME THE STOR - Y IS THE GIRL IS ME.

PCED, DIM. & RIT.

MOLTO DIM. & RIT.

CELLI

D7sus D7 G Em C D7sus D7 G

90