

SHE'S OUT OF MY LIFE

Words and Music by
TOM BAHLER

Slowly, freely ♩ = 69

D \flat
D \flat /F
G \flat
D \flat /A \flat
D \flat maj7/C
G \flat /B \flat
D \flat
B \flat m7
D \flat maj7/A \flat

G \flat
A \flat /G \flat
Fm7
E \flat m7
A \flat 9sus
A \flat 7
D \flat

G \flat /B \flat
A \flat /C
D \flat
G \flat /B \flat

D \flat sus
D \flat
D \flat sus
D \flat
D \flat dim7
D \flat

1. She's out of my life, _____
 2. It's out of my hands, _____

she's out of my life, _____
 it's out of my hands, _____

Edm7

Dm7

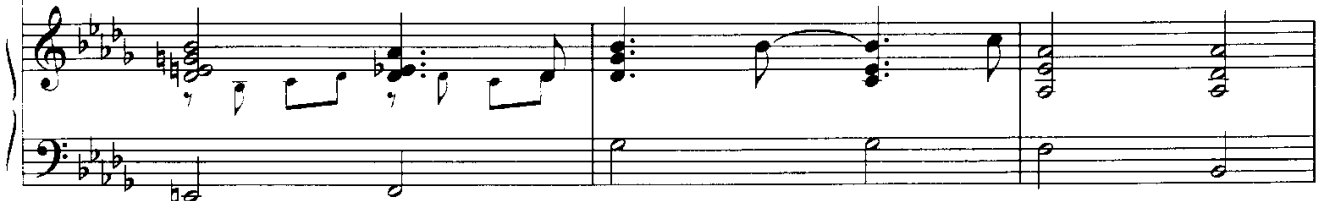
A7G

Fm7

B7m



And I don't know wheth - er to laugh or cry -
To think for two years she was here,



Ebm

Cm7(+5)

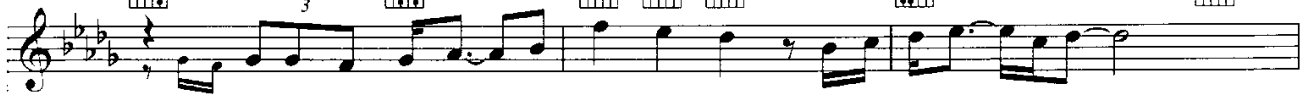
F7(#5)

F7

B7m

Gb

D7/F



I don't know wheth - er to live or die. And it cuts like a knife,
and I took it for grant - ed, I was so cava - lier. Now the way that it stands,



Ebm7

A7sus

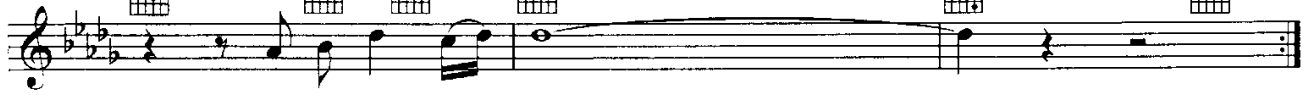
Ab

1.

Db

Gb/Bb

Ab/C



she's out of my life.
she's out of my



2.

Db

E/B

B

Gb/Bb

D7/Ab



hands. So I've learned that love's not pos - ses - sion,



E/B B E B:D

and I've learned that love won't wait... Now I've learned that

F/E₂ Bbm Gb(9) Ebm7

love needs ex - pres - sion, but I learned too...

D^b/A^b A^b G^b(9) D^b G^b6 D^b

late... And she's out of my life,

Gdim7 Absus Edim7 D^b(9)/F G^b A^b/G^b

she's out of my life... Damned in - de - ci - sion



and curs-ed pride kept my love for her_ locked deep_ in - side_ And it



cuts like a knife, she's out of my life,

a tempo



my life.