

# I CAN LOVE YOU LIKE THAT

Words and Music by  
STEVE DIAMOND, MARIBETH DERRY  
and JENNIFER KIMBALL

Moderately slow ♩ = 88



Musical notation for the first system, including guitar and piano parts. The piano part starts with a *mf* dynamic marking.



Musical notation for the second system, including guitar and piano parts.



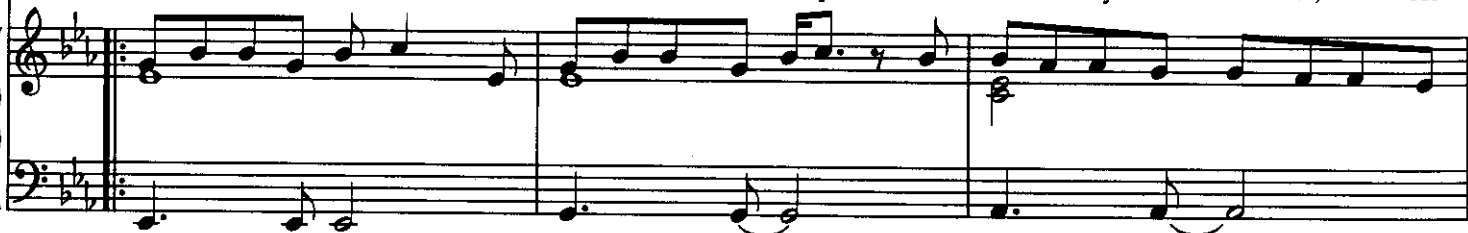
Musical notation for the third system, including guitar and piano parts.

1. They

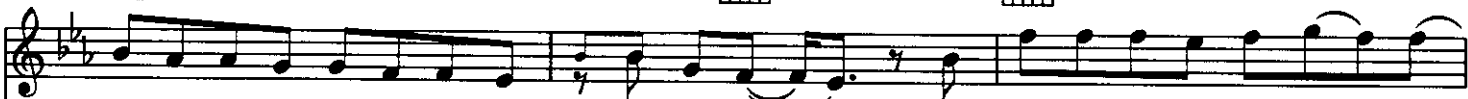
Verse:



read you Cin-der - el - la, you hoped it would come true;\_ that one day your Prince Charm-ing would come  
nev - er make a prom-ise I don't in-tend to keep,\_ so when I say for - ev - er, for -



res - cue you. You like ro - man - tic mov - ies, and you nev - er will for - get the  
ev - er's what I mean. I'm no Ca - sa - no - va, but I swear this much is true:



way you felt when Ro - me - o kissed Ju - li - et. And all this time that you've been\_ wait -  
I'll be hold - ing noth - ing back when it comes to you. You dream of love that's ev - er - last -



- ing. You don't have to wait no\_ more. I can love you like that,\_  
- ing, ba - by, op - en up your\_ eyes.



## Chorus:



I would make you my world, — move heav-en and earth — if you were my girl. —

Fm7/Bb



I will give you my heart, — be all — that you need, — show you you're ev -

Ab(9)



- ery-thing that's pre-cious to me. — If you give me a chance, —

1.



I can love you like that. — I'll love — you like that. — I can love you like that. —

D♭maj9



Fm7/B♭



2. E♭



Musical staff with treble clef, key signature of two flats, and a melodic line.

2. I I'll love\_ you like that\_

Piano accompaniment for the first system, including grand staff and bass clef.

Bridge:

B♭m7



Fm7



Musical staff with treble clef, key signature of two flats, and a melodic line.

If you\_ want\_ ten-der-ness, I've got\_ ten - der - ness, and I

Piano accompaniment for the bridge section, including grand staff and bass clef.

E♭sus



E♭



E♭sus



E♭



B♭m7



Musical staff with treble clef, key signature of two flats, and a melodic line.

see through\_ to the heart of you\_ If you want a man who will un -

Piano accompaniment for the second system, including grand staff and bass clef.

Fm7



A♭(9)



Fm7/B♭



Musical staff with treble clef, key signature of two flats, and a melodic line.

der-stand, you don't have to look ver - y far\_

Piano accompaniment for the third system, including grand staff and bass clef.

## Chorus:



*ff* - ed to. — Hey, if I on - ly want -

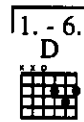


- ed to. — Hey, if I on - ly want - ed to. —



Hey, if I on - ly want - ed to. — Oh. — Oh. —

Vocal ad lib. - play 7 times



Oh. — Oh. — Oh. — oh. —

## Verse 2:

If I wanted to I could run fast as a train;  
 Be as sharp as a needle that's twisting your brain.  
 If I wanted to I could turn mountains to sand;  
 Have political leaders in the palm of my hand.  
 I wouldn't have to be in love with you.

(To Chorus:)