

# SAY YOU, SAY ME

Words and Music by LIONEL RICHIE

Slow Ballad

Ab



Eb/G



Fm



Ab/Eb



Cm/Eb



Db



Bbm



Musical notation for the first system, including guitar and piano accompaniment. The piano part starts with a *mp* dynamic marking.

Ab (add Bb)



Ab



Eb/G



Fm



Ab/Eb



Cm/Eb



Musical notation for the second system, including guitar and piano accompaniment. The piano part starts with a *mf* dynamic marking. The vocal line includes the lyrics: "Say you... say me... Say it for al-

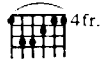
Db



Db/Eb



Ab



Eb/G



Musical notation for the third system, including guitar and piano accompaniment. The piano part features a triplet of eighth notes. The vocal line includes the lyrics: "ways. That's the way it should be... Say you... say me..."

Fm

Ab/Eb

Cm/Eb

Db

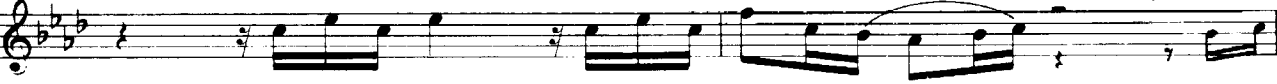
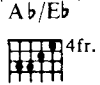
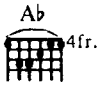
Db/Eb

Ab

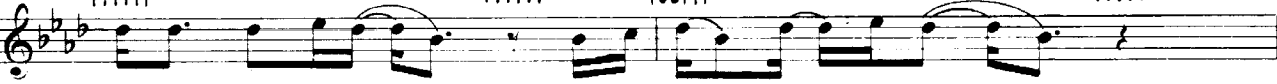
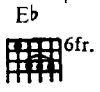
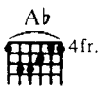
Ab/Eb



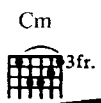
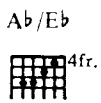
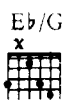
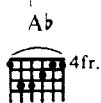
Say it to - geth - er, nat - 'ral - ly. —



{ I had a dream. I had an awe - some dream: —  
As we go down life's lone - some high - way. — seems the



peo - ple in the park — play - in' games — in — the dark. —  
hard - est thing to do — is to find a friend — or two. —



And what they played was a mas - quer - ade. — But from be -  
That help - ing hand, some - one who un - der - stands. — And when you



Bb m



Ab



1. Gb



hind the walls\_ of doubt, — a voice was cry - ing out. —  
feel you've lost\_ your way, — you've got

Eb



2. Gb



Eb



some-one there\_ to say, — "I'll show you." —

Ab



Eb/G



Fm



Ab/Eb



Cm



Db



Db/Eb



Say you, — say me. — Say it for al - ways. That's the

Ab



Eb/Ab



Eb



Ab



Eb/G



Fm



Ab/Eb



Cm



To Coda



way it should be. — Say you, — say me. — Say it to - geth-

Db



Db/Eb



Faster  
Ab



er,

nat - 'ral - ly.

So you

Cb



Gb



Db



Ab



think you know— the an - swers.

Oh. ——— no. ———

Well, the

Cb



Gb



D



Eb m



whole world's got ya danc - in', that's right, I'm ——— tell - in' you.

It's

Cb



Gb



Db



Ab



time to start ——— be - liev - in',

oh. ——— yes. ———

Be -

Tempo 1

(♩ = ♩)

Cb

Db

4fr.

Eb

6fr.

D.S. al Coda



lieve in who you are;— you are a shin - ing star.

Coda

Db

4fr.

Db/Eb

6fr.

Ab

Eb/Ab

3fr.

Eb

6fr.

er, nat - 'ral - ly. Say it to - geth -

Db

4fr.

Ab/C

x

Bbm7

x

Db/Eb

6fr.

Ab

4fr.

er, nat - 'ral - ly.

rit.