

# YESTERDAY

Highest Chart Position in the U.S.: #1-10/9/65

Album: "YESTERDAY" . . . AND TODAY

Paul woke up with a tune in his head, but he couldn't come up with any lyric, so this song was called "Scrambled Eggs" for a time. The lyric for "Yesterday" came to him later. Paul feels that it's one of the most instinctive tunes he's written.

**Music Notes:** Paul sang lead, backed-up by his own guitar and a string quartet. This is a "live" recording, where you can hear the slides up and down on the strings. John, George and Ringo did not play.

Words and Music by  
JOHN LENNON and PAUL McCARTNEY

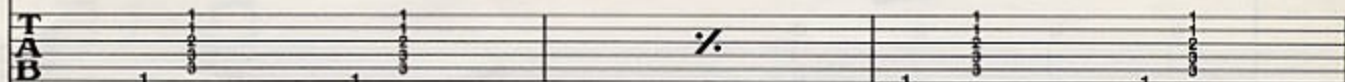
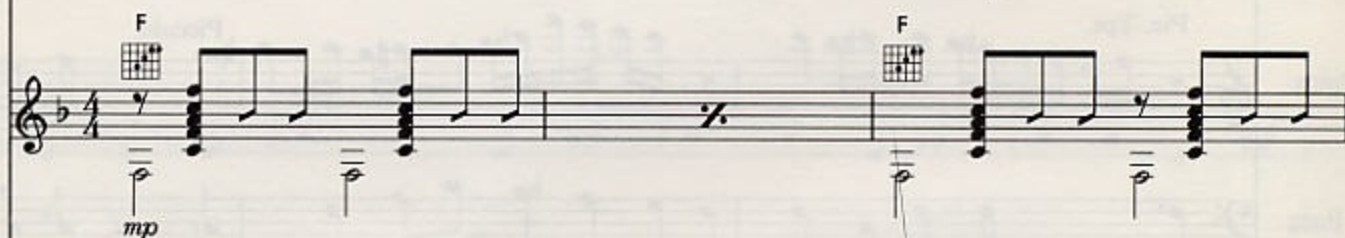
Ballad with feeling (♩ = 98)

Lead Vocal

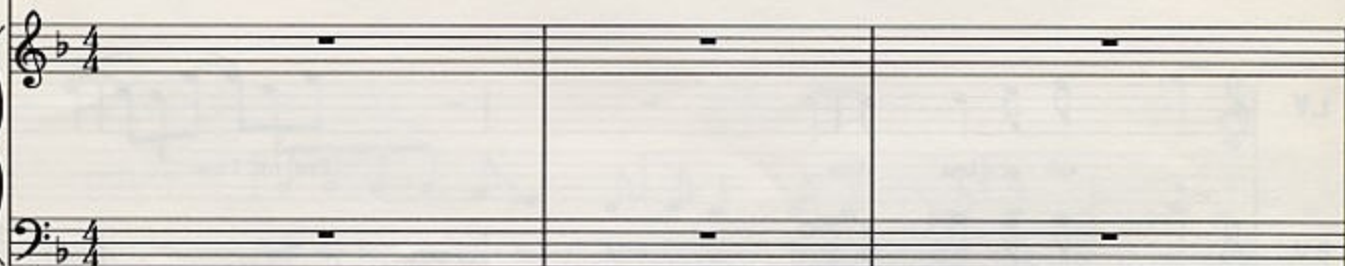


Yes-ter - day —

Acoustic  
Guitar



Synthesizer



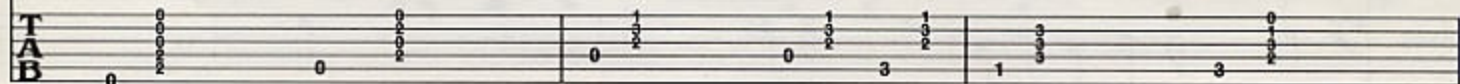
L.V.



all my trou-les seemed so far a - way, —

now it looks as though they're

Acst.  
Gtr.





L.V. here to stay, — oh I be - lieve — in yes - ter - day. —

Acst. Gtr.

TAB

Detailed description: This system contains the first line of music. The vocal line (L.V.) is in a treble clef with a key signature of one flat. The lyrics are "here to stay, — oh I be - lieve — in yes - ter - day. —". The acoustic guitar part (Acst. Gtr.) is in a treble clef with a key signature of one flat, featuring a steady eighth-note accompaniment. The guitar tablature (TAB) is shown below the guitar staff, with fret numbers 1, 0, 2, 3, and 0 indicated.

L.V. Sud - den - ly — I'm not half the man — I used to be,

Acst. Gtr.

TAB

Detailed description: This system contains the second line of music. The vocal line (L.V.) continues with the lyrics "Sud - den - ly — I'm not half the man — I used to be,". The acoustic guitar part (Acst. Gtr.) continues with the same accompaniment. The guitar tablature (TAB) shows fret numbers 1, 0, 0, 0, 0, 0, 3, and 2.

String Quartet

Synth.

Detailed description: This system shows the String Quartet and Synth parts. The String Quartet part is in a treble clef with a key signature of one flat, playing a simple harmonic accompaniment. The Synth part is in a bass clef with a key signature of one flat, playing a simple bass line.

L.V. there's a sha - dow hang - ing o - ver me, — oh yes - ter - day — came

Acst. Gtr.

TAB

Detailed description: This system contains the third line of music. The vocal line (L.V.) continues with the lyrics "there's a sha - dow hang - ing o - ver me, — oh yes - ter - day — came". The acoustic guitar part (Acst. Gtr.) continues with the same accompaniment. The guitar tablature (TAB) shows fret numbers 1, 3, 1, 1, 0, 2, and 3.

Synth.

Detailed description: This system shows the Synth part. The Synth part is in a bass clef with a key signature of one flat, playing a simple bass line.



L.V. sud - den - ly. — Why she had to go I don't

B $\flat$  F A7sus A7 Dm C B $\flat$  Dm/A

Acst. Gtr.

TAB

Synth.

Detailed description: This system contains the first four measures of the piece. The vocal line (L.V.) has lyrics: "sud - den - ly. — Why she had to go I don't". The guitar part (Acst. Gtr.) features a rhythmic pattern of eighth notes with a 'y' (yamaha) symbol. The synth part (Synth.) consists of chords and single notes in the right and left hands. Chord diagrams are provided for each measure.

L.V. know, she would - n't say. — I said some - thing wrong now I

C7/G C7 F A7sus A7 Dm C B $\flat$ maj7 Dm/A

Acst. Gtr.

TAB

Synth.

Detailed description: This system contains the next four measures. The vocal line (L.V.) has lyrics: "know, she would - n't say. — I said some - thing wrong now I". The guitar part (Acst. Gtr.) continues with the same rhythmic pattern. The synth part (Synth.) continues with chords and single notes. Chord diagrams are provided for each measure.



L.V. long for yes - ter - day. Yes - ter - day, —

Acst. Gtr. C7/G C7 F F

TAB

Synth.

L.V. love was such an eas - y game to play. — Now I need a place to

Acst. Gtr. Em A7 Dm Dm/C Bb C7

TAB

Synth. 9



# CAN'T BUY ME LOVE

**L.V.**

hide a - way, — oh I be - lieve — in yes - ter - day. —

**F** **C/E** **Dm7** **G** **Bb** **F**

**Acst. Gtr.**

**TAB**

**Synth.**

**L.V.**

Why she had to go I don't know, she would - n't say. —

**A7sus** **A7** **Dm** **C** **Bb** **Dm/A** **C7/G** **C7**

**Acst. Gtr.**

**TAB**

**Synth.**



L.V.

Acst. Gtr.

TAB

Chords: F, A7sus, A7, Dm, C, Bbmaj7, Dm/A, C7/G, C7

Synth.

L.V.

Acst. Gtr.

TAB

Chords: F, F, Em, A7

Synth.

Solo Violin




L.V.  game to play.— Now I need a place to hide a - way.— oh

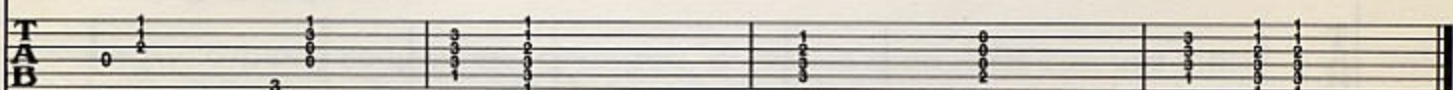
Acst. Gtr.  Dm Dm/C B $\flat$  C7 F C/E

TAB 

Synth. 

L.V.  I be - lieve— in yes - ter - day.— Mm mm mm mm mm.

Acst. Gtr.  Dm7 G B $\flat$  F F/C G/B B $\flat$  F

TAB 

Synth. 